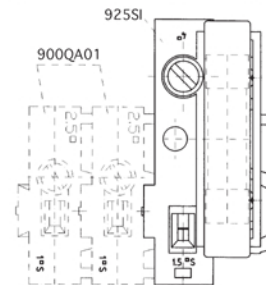
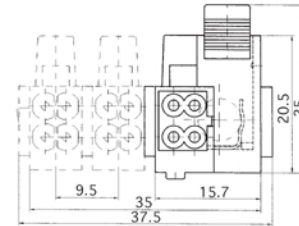
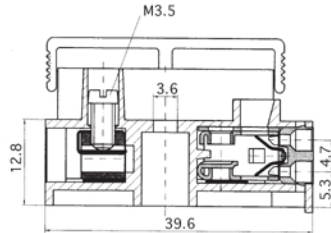
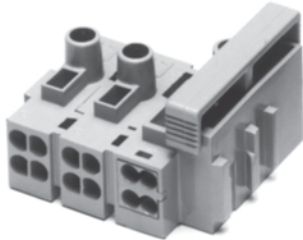


SERIES 925SI

Fused terminal block assemblies



FEATURES

Series 925SI assemblies are created by using fused terminal block type 925SI01 (panel mounting) or 925SIRZ01 (with catch pins), interlocked with type 900QA01 modules, various lengths of fused terminal blocks can be assembled. Additionally earth tags (type SL90022) can be fitted into the screwless ports to provide a screw earth connection.

Approvals		
Nominal Cross-Section mm ² Screwless terminals	1.5	
Nominal Cross-Section mm ² Screw terminals	4.0	
Voltage Rating	V	250/400

TECHNICAL DETAILS

Mouldings:	polyamide 6/6, white
Inserts:	steel, tinned
Screws:	M3.5 steel, zinc plated, chromed
Screw tightening torque:	max: 0.8 Nm
Contacts for fuses:	stainless spring steel
Clamping springs:	stainless spring steel
Temp. limits:	max short term: 160° C continuous: 100° C
Current rating:	to EN 60 127: 6.3A
Voltage rating:	fuse holders: 250v
Conductor size:	
screw terminals:	up to 6mm ²
screwless terminals:	0.5mm ² - 1.5mm ²
Wire stripping length:	
screw terminals:	8mm - 8.5mm
screwless terminals:	7mm - 7.5mm

OPTIONS

Assemblies can consist of any number of fused and unfused poles. The fused poles can be at either end or in the middle of assemblies.

